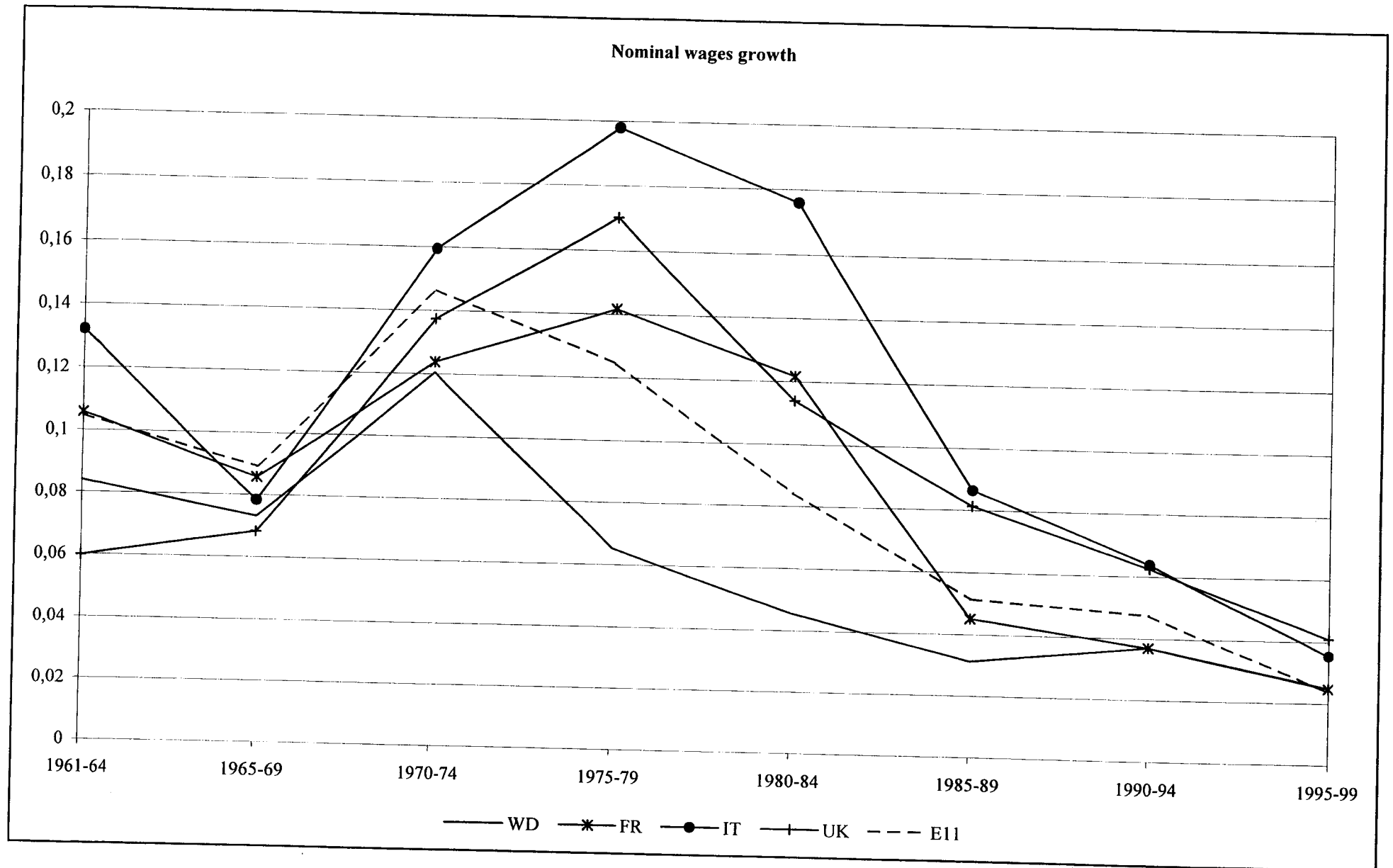


Figure 1.1



Source: DG II AMECO Database

Figure 2.1

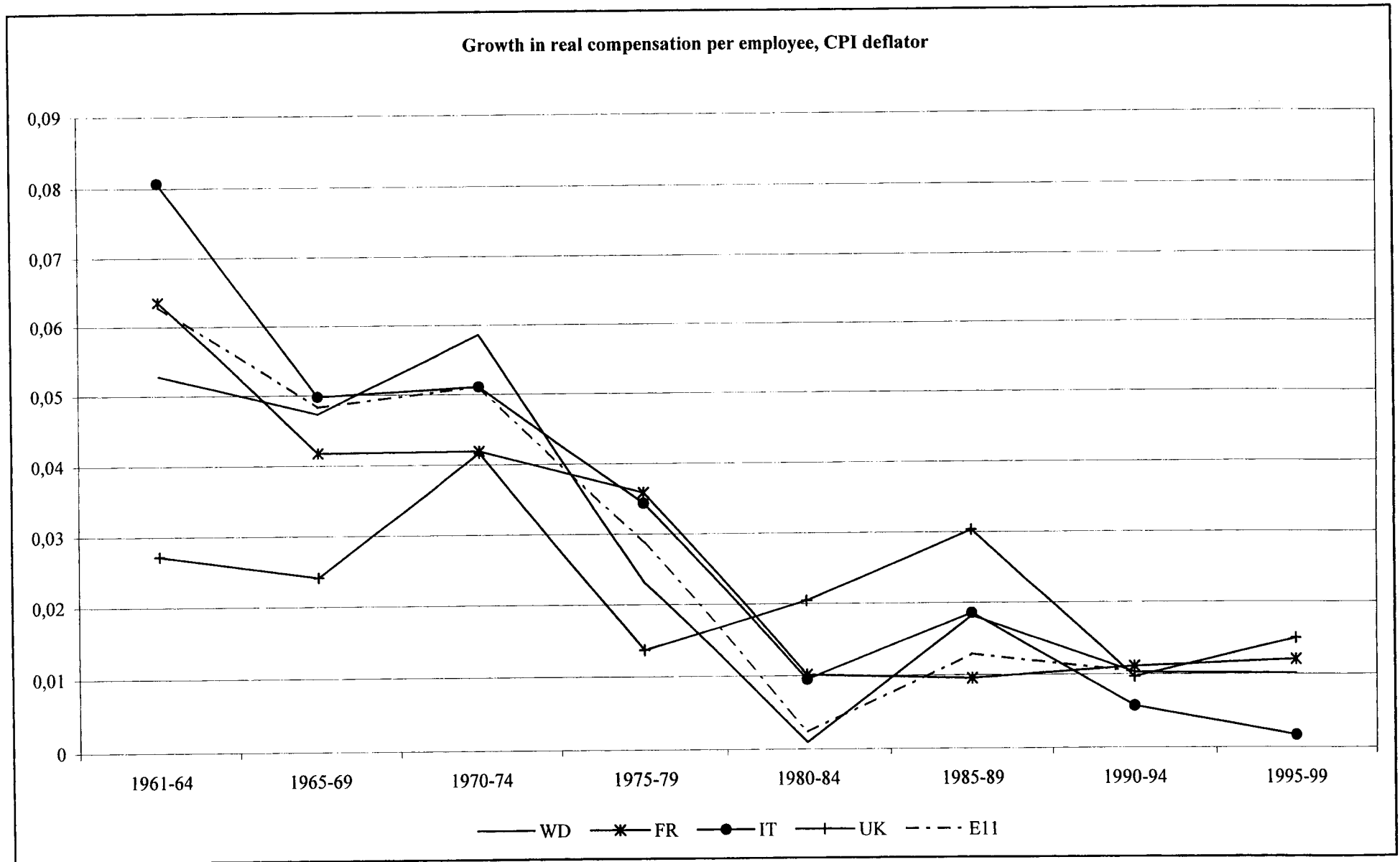
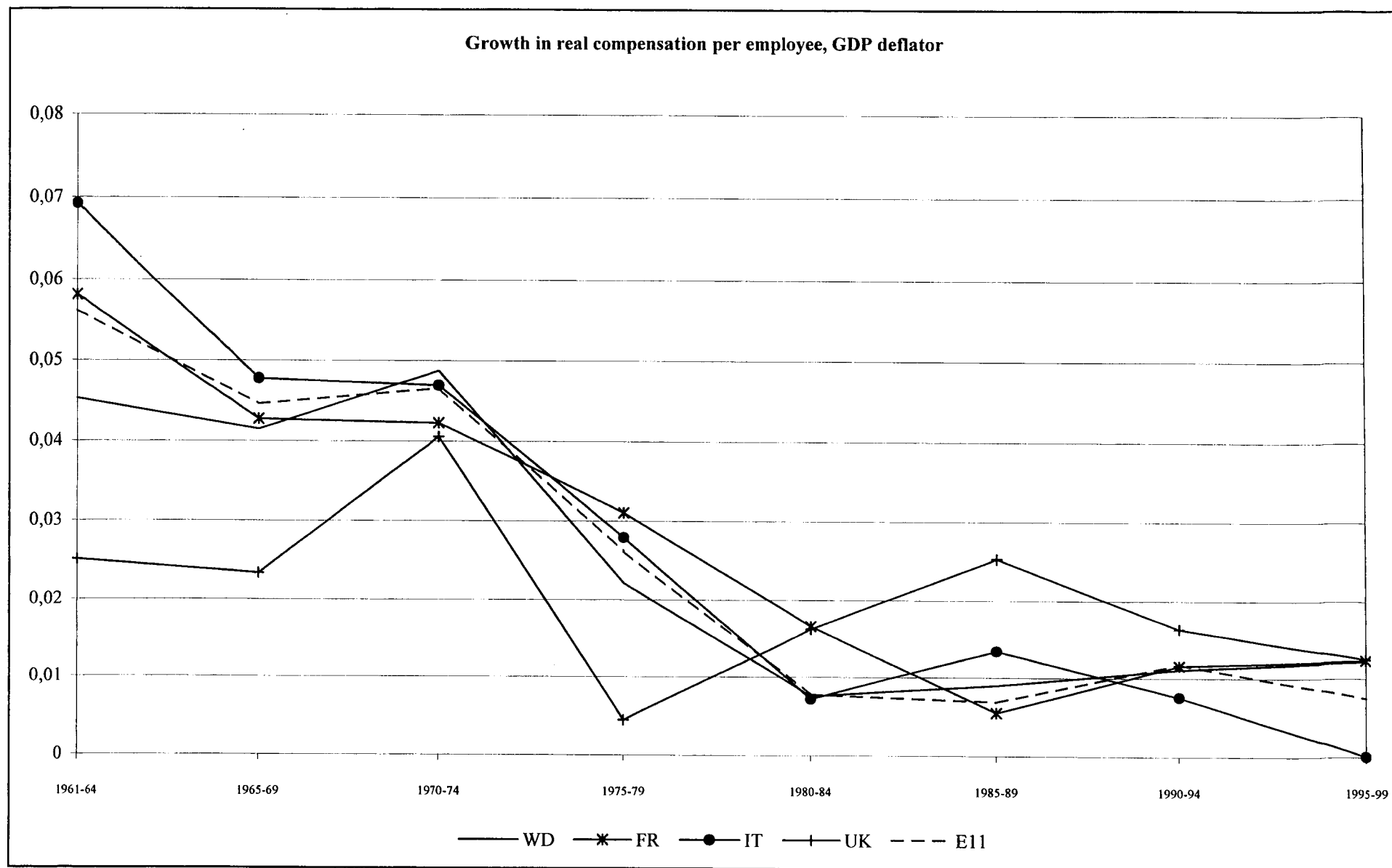
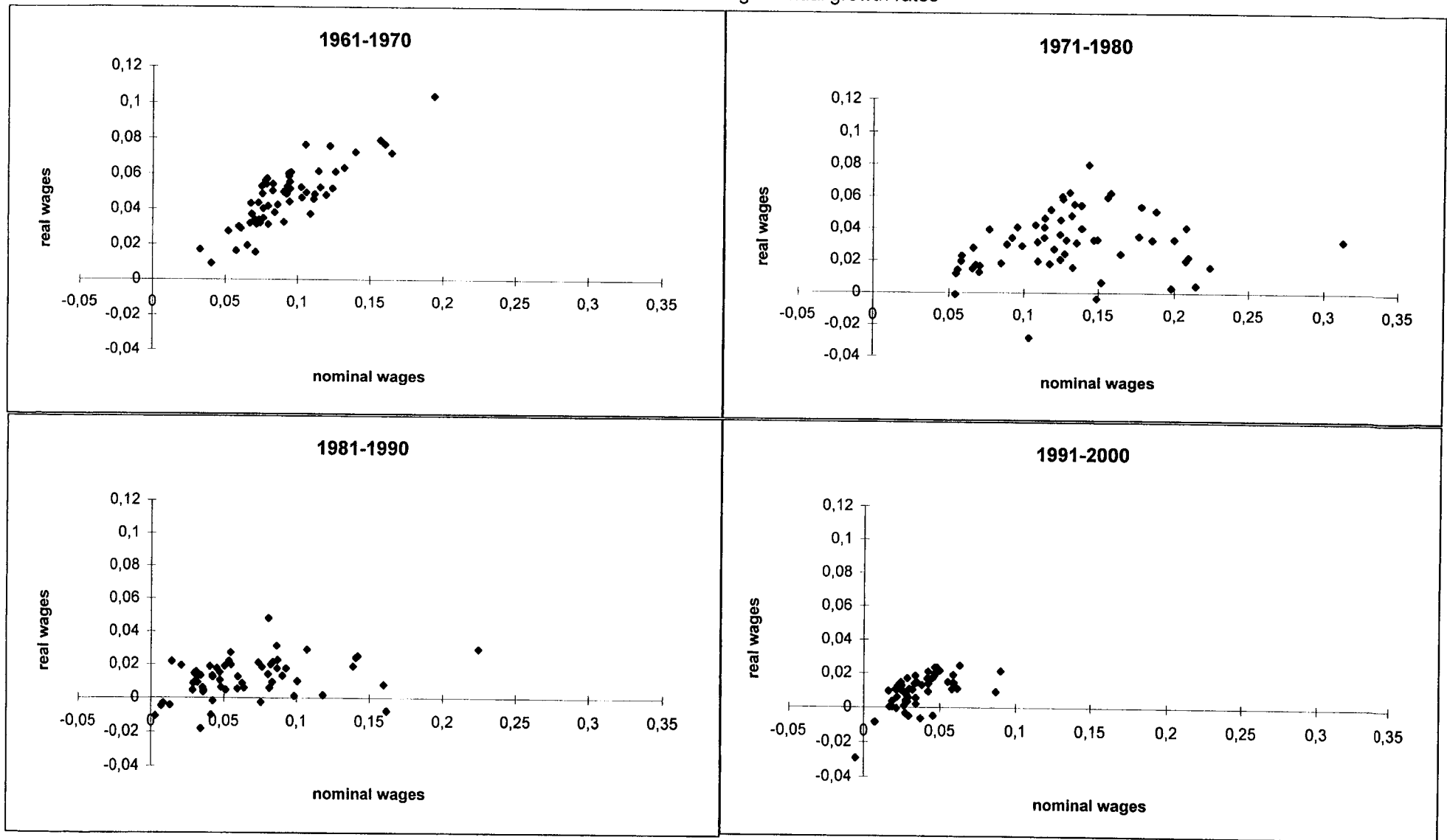


Figure 2.2



Source: DG II AMECO Database

Figure 3.1
Nominal versus real wage annual growth rates



Source: DG II AMECO Database

Figure 4.1

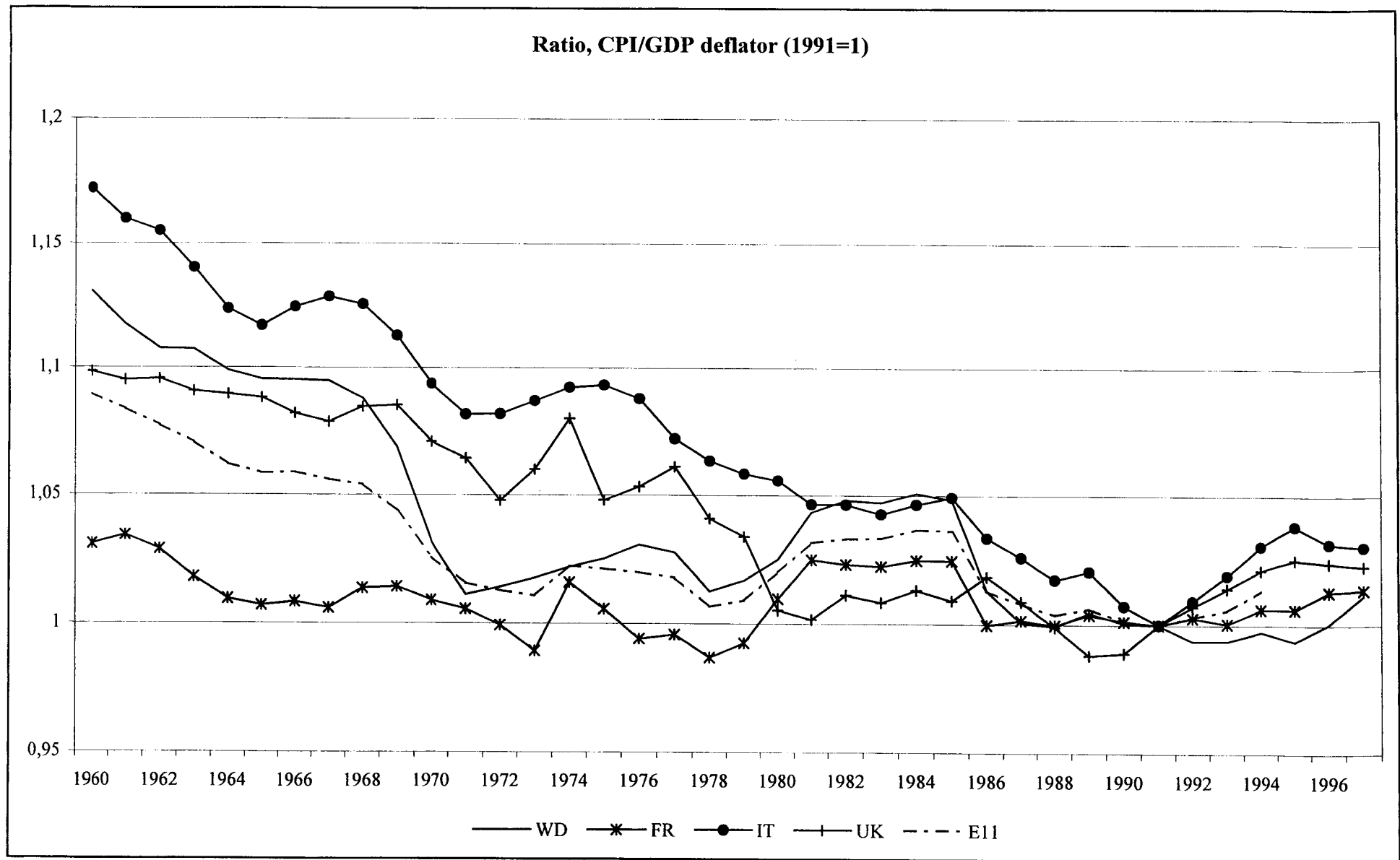
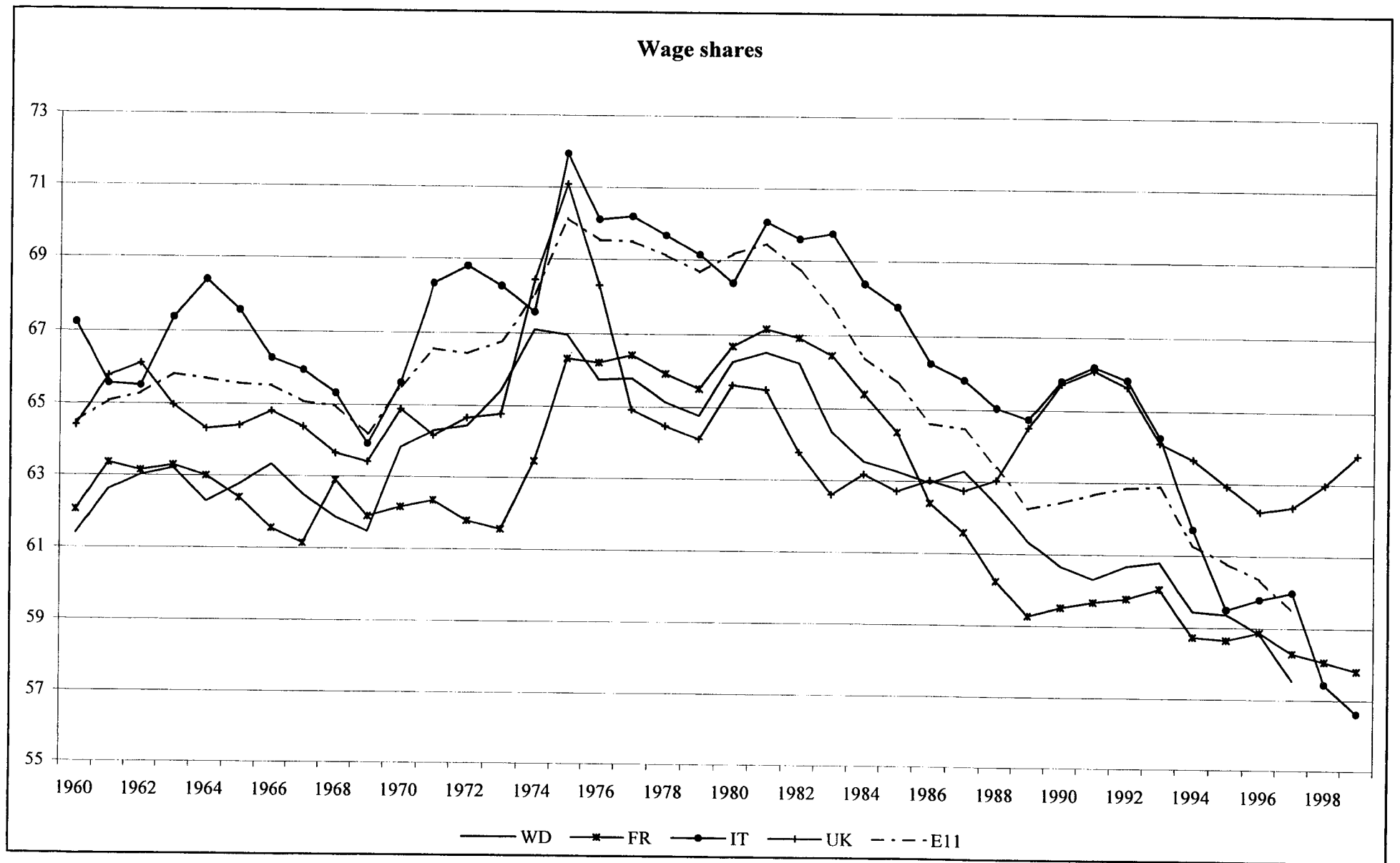
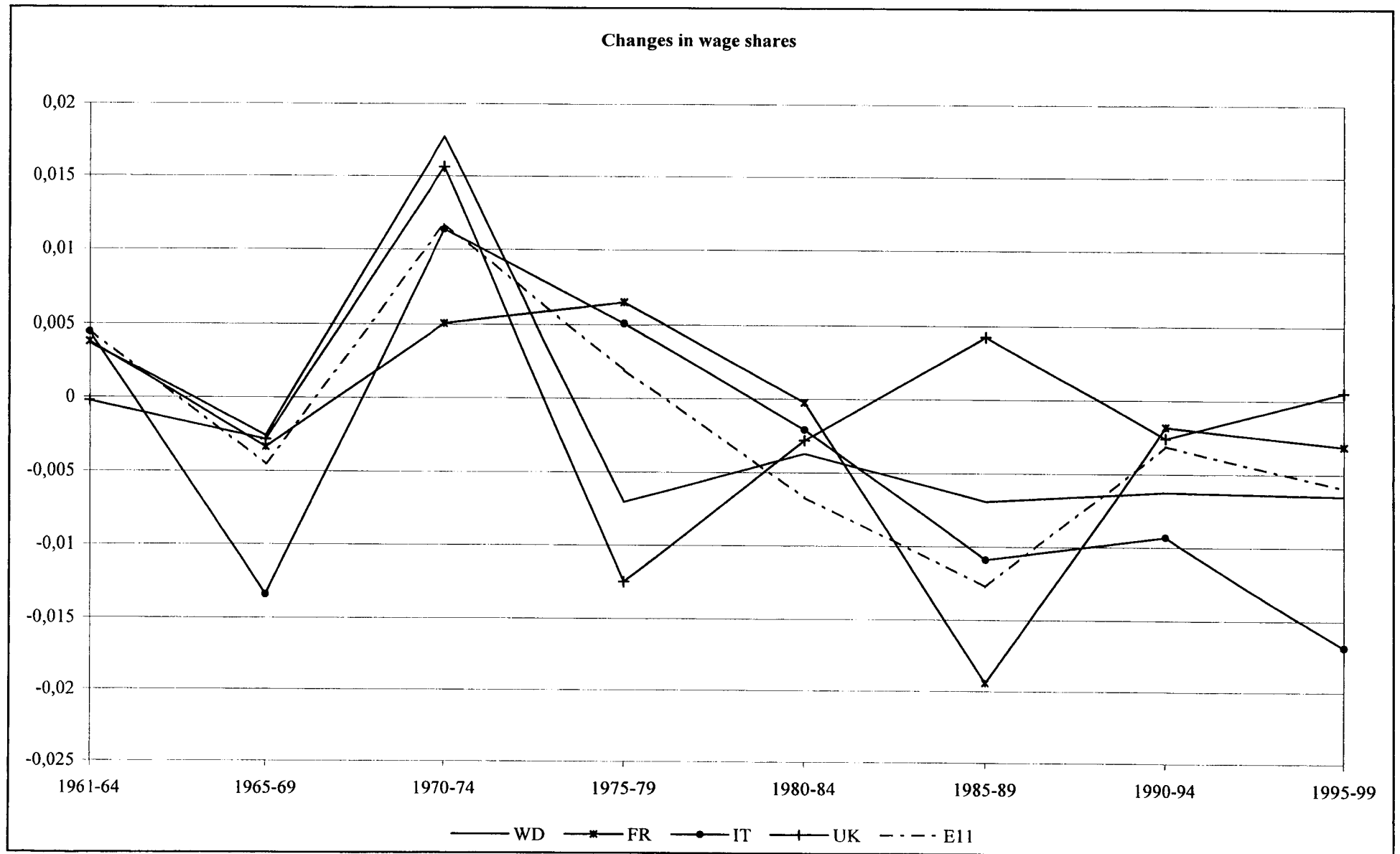


Figure 5.1

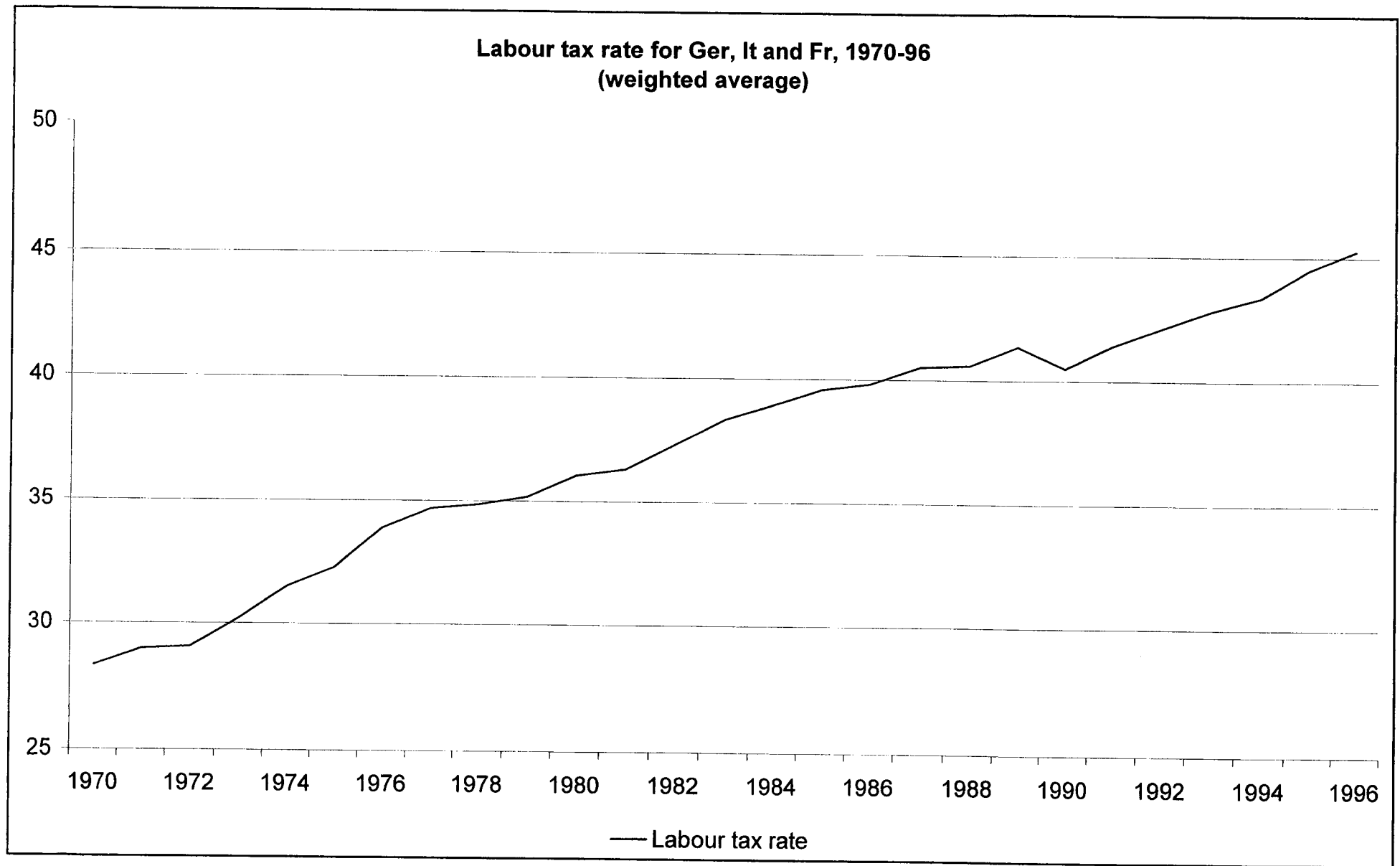


Source: DG II AMECO Database

Figure 5.2

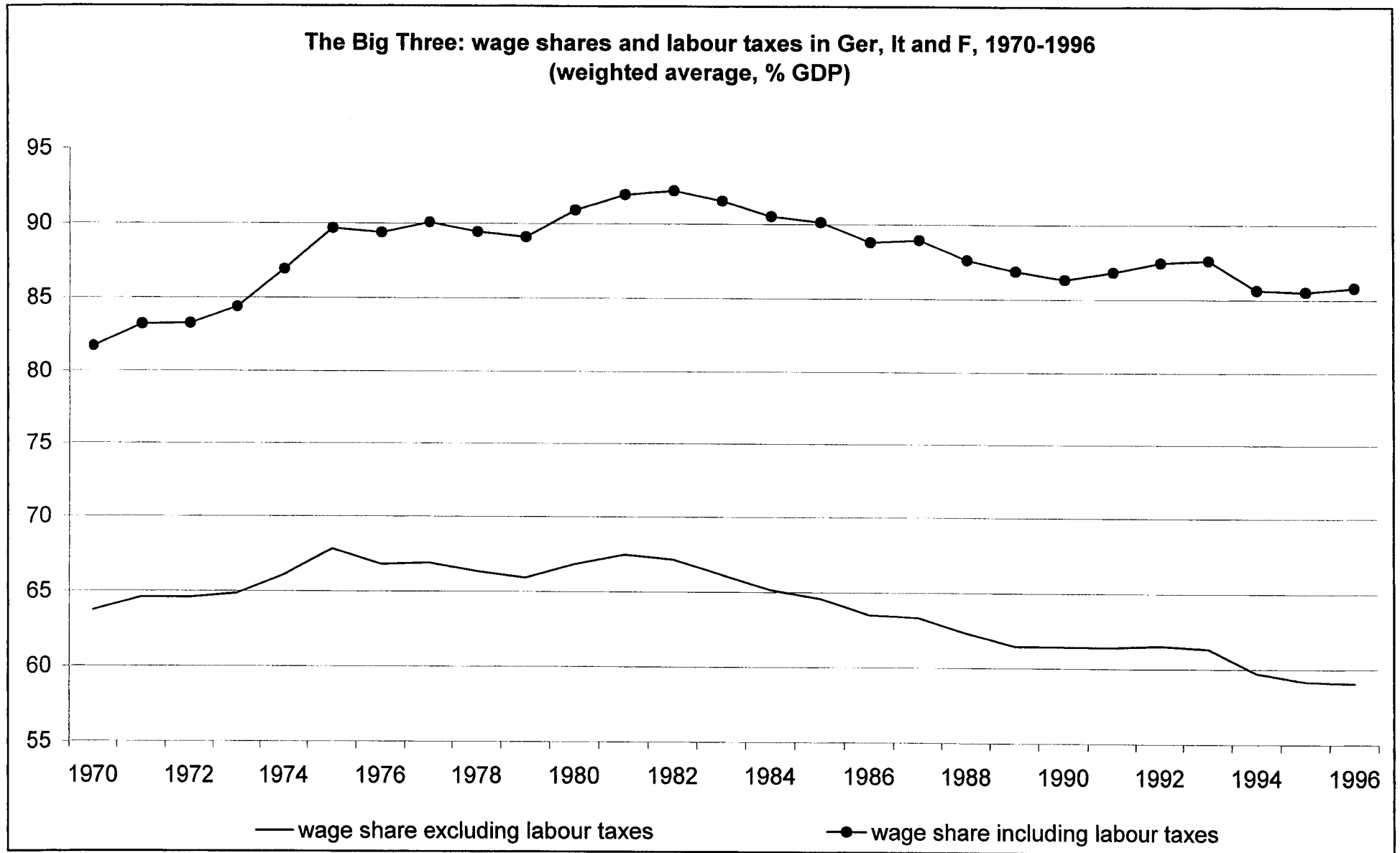


Source: DG II AMECO Database



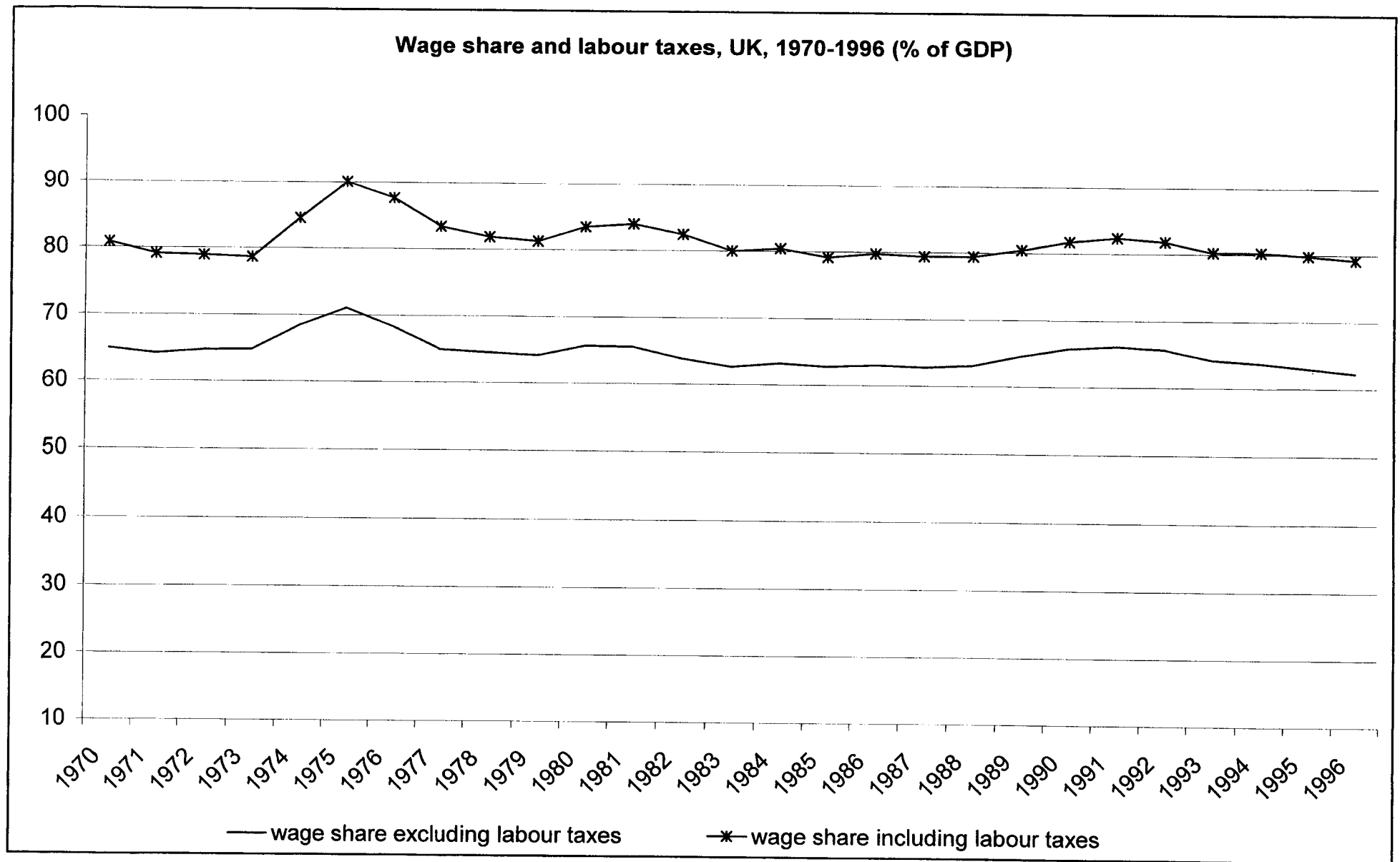
Source: Eurostat (1998)

Figure 6.2



Source: Eurostat (1998) and DG II AMECO Database

Figure 6.3



Source: Eurostat (1998) and DG II AMECO Database

Figure 7.1

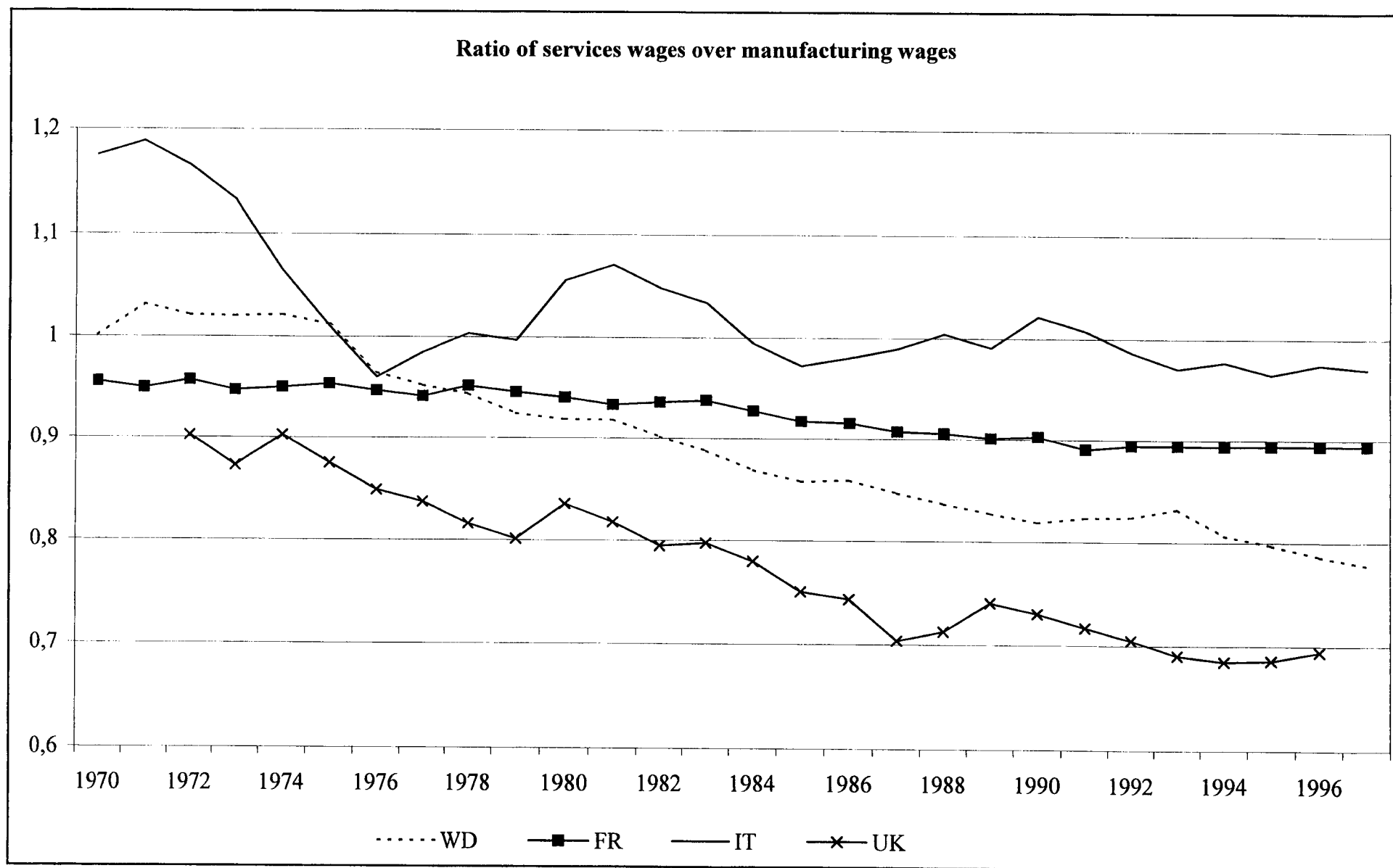


Table 8.1

LABOUR COSTS

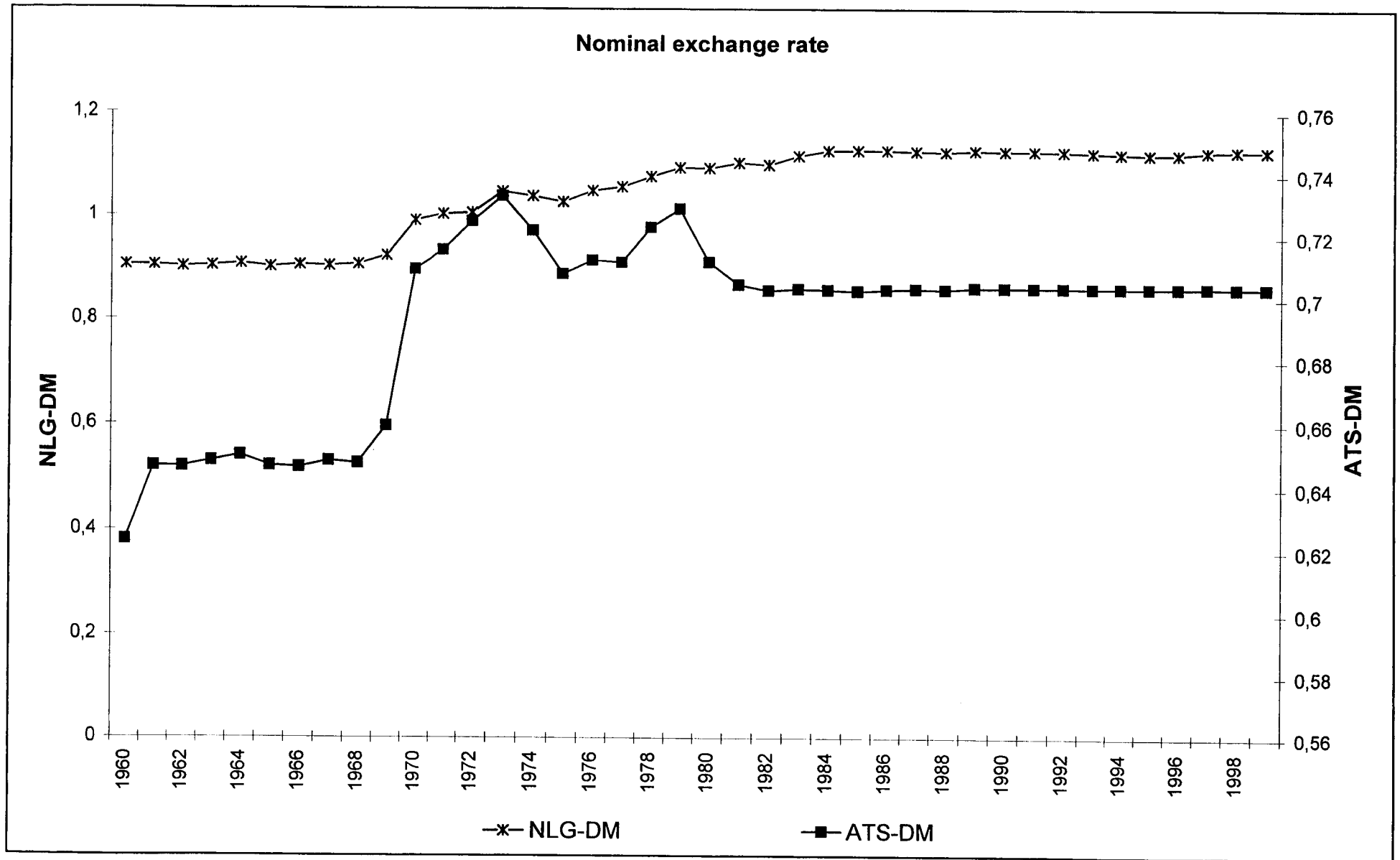
Regional Developments in Wages

Compensation per employee (1000 ECU)			
Germany		Total	Industry
	B-W	23,32	36,18
	BA	21,05	32,24
	BE	15,89	36,06
	BRA		
	BRE	31,95	36,82
	HA	33,90	41,46
	HE	24,67	36,42
	M-V		
	NI	20,15	32,37
	N-W	24,37	35,22
	R-P	19,85	36,48
	SAA	25,52	34,38
	SAC		
	S-A		
	S-H	18,43	30,19
	TH		
Average:		23,55	35,26
Standard dev.:		5,48	2,99
Lowest/Highest:		0,47	0,73

Compensation per employee (1000 ECU)			
France		Total	Industry
	IdF		36,5
	C-A		25,3
	PI		25,1
	H-N		26
	CE		24,2
	B-N		23
	BOU		23,9
	N-P-C		25,4
	LO		24,6
	AL		25,3
	F-C		23,6
	PdL		22,6
	BRE		21,7
	P-C		22,7
	AQ		24,9
	M-P		23,4
	LI		22,7
	R-A		26,9
	AU		23,1
	L-R		24,8
	P-A-CA		25,6
	CO		15
Average:			24,37727
Standard dev.:			3,58873
Lowest/Highest:			0,410959

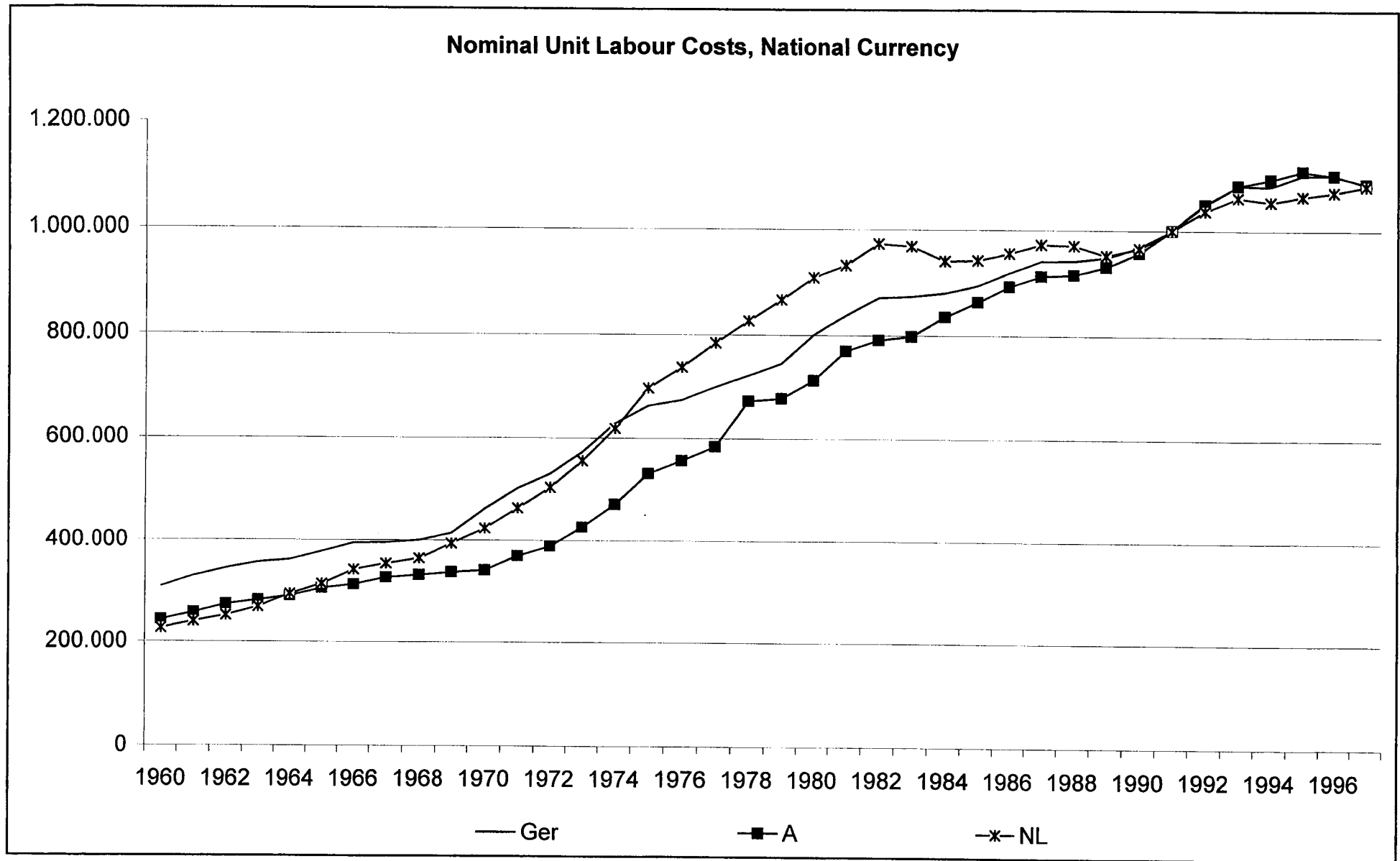
Compensation per employee (1000 ECU)			
Italy		Total	Industry
N. Ovest	PI	16,7	28,2
	VA	15,4	23,6
	LI	17,9	29,8
	LO	17,4	26,9
N.Est	TAA	14,9	25
	VE	14,9	22,7
	FVG	16,5	26
	EMR	15,6	26,3
Centro	TO	15,5	23,8
	UM	15,1	21,4
	MA	13,3	20,7
	LZ	19,9	28,7
	ABR	12,5	19,4
	MS	11,1	19,8
	CAM	14,2	22,7
Sud	PU	13	19,4
	BA	12,5	22
	CA	12	17,3
	SC	14,8	19,8
	SA	14,6	21,3
Average:		14,89	23,24
Standard dev.:		2,156	3,5208253
Lowest/Highest:		0,5578	0,5805369

Figure B.1



Source: DG II Ameco Database

Figure B.2



Source: DGII AMECO Database